

Diploma in Christian Studies (Christian Leadership) DipCS(CL)*

Level 5, 120 credits

Programme Summary

On completion of the Diploma in Christian Studies students will have developed the capacity to tell the biblical story, to read the Scriptures within their wider historical context and to understand a theological framework for life and ministry. Students will have begun the process of developing the disciplines necessary both to maintain their own spiritual growth and to serve in voluntary leadership capacities within the church and in our world.

The Christian Leadership strand equips people to evaluate and deliver ministry programmes within their context, to think deeply about their faith, and to lead a wide range of Christian operations. Students are equipped with a biblical and theological foundation upon which applied Christian leadership skills are developed through internship in real life practical contexts.

Flexible Study Options

Students can study towards the DipCS(CL) via a range of flexible learning options, including a combination of on campus and Distance Learning courses, as well as part-time study. This programme may also be studied at one of our partner institutions.

As a part of the Leadership Internship papers, full-time students will complete 210 hours of supervised ministry practice over each semester (16-20 hours a week). These hours can be worked via a placement at either a church, mission or community ministry.

Students who complete the DipCS(CL) may staircase into the second year of the Bachelor of Theology.

Programme Requirements

The DipCS(CL) is a one year full-time (or part-time equivalent) programme. It is made up of four level 5, 15-credit courses and two level 5, 30-credit courses.

2025 Fees

Domestic: \$891 per 15-credit course. **\$7,128** for programme (6 courses, 120 credits).

International: \$3,015 per 15-credit course. **\$24,120** for programme (6 courses, 120 credits).

NOTE: Annual fee may vary. A Student Services fee of \$4.20 per credit is charged for on-campus courses or \$63 for distance learning. Please refer to Fee Schedule for more details (www.laidlaw.ac.nz/fees)

**This programme leads to the New Zealand Diploma in Christian Studies (Level 5) Christian Leadership Strand.*

Core Courses

115.515 READING THE BIBLE

Approach the Bible from the perspective of biblical theology, which allows the Bible to tell its own story as a unified grand narrative that culminates in the person and work of Jesus Christ. Explore the unity, diversity, and central themes of the Bible to make sense of the relationship between the Bible, theology, and all of life.

201.515 ENGAGING THEOLOGY

Be introduced to systematic theology and learn to think theologically. You will examine God's self-revelation, how that revelation can be understood, and why it is foundational for Christian faith. Explore the arrangement of this revelation into a set of core beliefs and their application to everyday living.

401.515 FORMATION

Reflect on personal and communal spiritual formation, through engagement with Scripture, theological understandings, and a variety of Christian spiritual traditions.

505.515 CHRISTIAN LEADERSHIP & MISSION

Apply a lens of Christian leadership and mission to the evaluation of personal and community faith journeys, ministry programmes within your context, and your own emerging sense of call and mission.

Internship Courses*

474.530 LEADERSHIP INTERNSHIP I

Evaluate Christian leadership principles within the context of church, mission, and community ministries. You will build, lead, and contribute to teams in a way that reflects your sense of call and personal strengths through the application of leadership practices that enhance the goals of your chosen ministry.

475.530 LEADERSHIP INTERNSHIP II

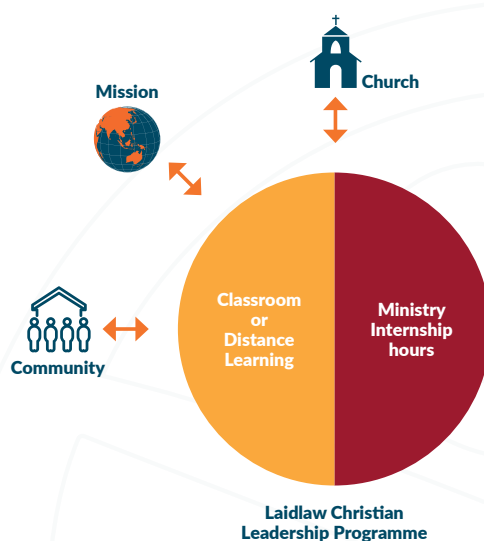
Build on leadership principles and practices learnt in Leadership Internship I, in order to develop skills for team leadership. You will reflect on team dynamics and project management as they are practised within your ministry context, and contribute to the goals of a church, mission, or community ministry.

*Students who wish to study part-time and complete the programme over two years should instead enrol in: 476.530 Leadership Internship I - Full Year and 477.530 Leadership Internship II - Full Year

By the end of this programme graduates will be able to:

1. Evaluate and apply a broad understanding of theology and biblical foundations to defined contexts based on textual interpretation and religious practice.
2. Evaluate faith-based programmes and/or practices based on strategies that integrate a personal and community faith journey, and the social, cultural and other contextual considerations of defined groups.
3. Apply key Christian leadership principles and Christian leadership dimensions to facilitate team development and accomplish organisational goals in particular areas of responsibility in Christian ministry.

Programme Offering



UPDATED 31 OCTOBER 2024

READY TO APPLY? ANY QUESTIONS?

0800 999 777

info@laidlaw.ac.nz | www.laidlaw.ac.nz

